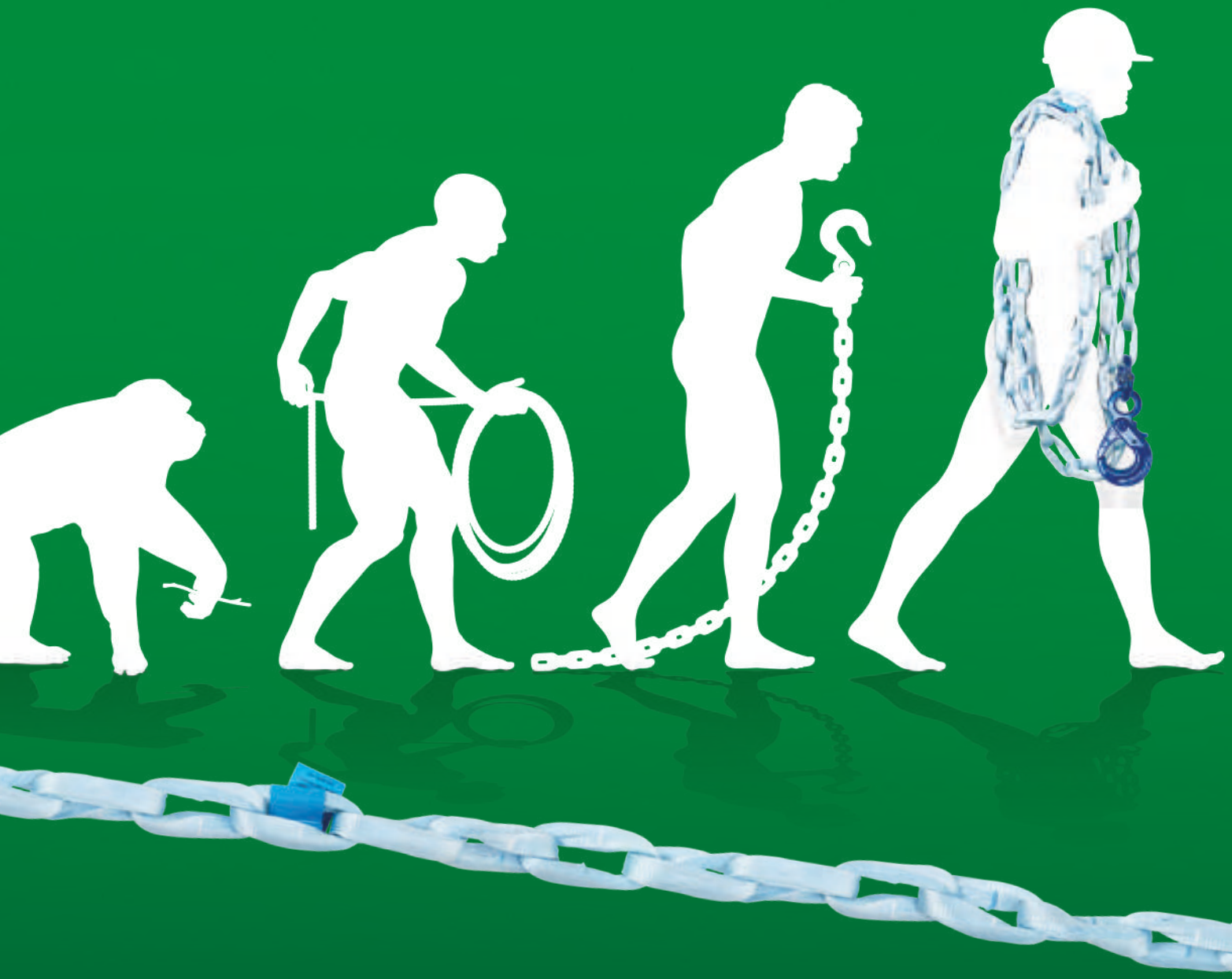


Chain of evolution





Evolve your lashing and lifting

Welcome to the fibre age

Step into a new era of safer and more efficient lashing and lifting. An era that is powered by Green Pin Tycan® Chains, made from Dyneema® fibre™. Green Pin Tycan® is up to eight times lighter than steel – yet just as strong. Evolve your lashing and lifting capabilities and enter a new reality in which safety and efficiency go hand in hand. Join leading heavy-lifting companies such as Mammoet in experiencing the superiority of our award-winning Green Pin Tycan® Chain.



Combine safety and efficiency

Green Pin Tycan® combines the almost paradoxical characteristics of being feather light and soft to the touch, while providing the strength of steel. This makes Green Pin Tycan® the first chain that offers both safety and efficiency.

Secure your crew and your cargo

Green Pin Tycan® allows companies to achieve a safer working environment for their crew. The soft touch and light weight reduce the risk of bad backs, cuts, bruises or hearing damage. Furthermore, the risk of damage to vulnerable and valuable cargo is reduced significantly, as is the threat of claims from customers.

Increase Operational Efficiencies

Green Pin Tycan® Chain is very easy to use and up to eight times lighter than a steel chain of comparable strength. This makes even long lengths of Green Pin Tycan® light enough for one person to work with all day long. Your operations will benefit from reduced sick leave, fewer delays and lower transport costs.

Chain of evolution

Green Pin Tycan® has the features to help you get the job done, while providing a much safer working environment and increased efficiency for you and your customers.

Light
Up to eight times lighter than steel chains



Green
Environmentally friendlier production process than that of a steel chain



Rugged
Very resistant to chemicals, grease, dirt, salt and low temperatures



Soft
Lower risk of damaging cargo and injuring crew



Strong
Made from Dyneema®, the world's strongest man-made fibre™



Waterproof
No absorption, it floats on water



Quiet
Reduced risk of hearing damage and noise pollution



Performance and quality guaranteed

Dyneema[®], the world's strongest man-made fibre[™], is manufactured by multinational DSM, headquartered in The Netherlands and respected as the premium brand for Ultra-High Molecular Weight Polyethylene (UHMwPE). The fibre is applied in products ranging from body armour to sports equipment.

The Dyneema[®] trademark provides end users with a guarantee that they are investing in performance and quality.





Light weight for heavy duties

For lashing, the light weight means even long lengths of Green Pin Tyca[®] can easily be handled by just one person. The example below shows the difference in weight of a rigger that carries and transports Green Pin Tyca[®] versus steel chain of 20 ton MBL.

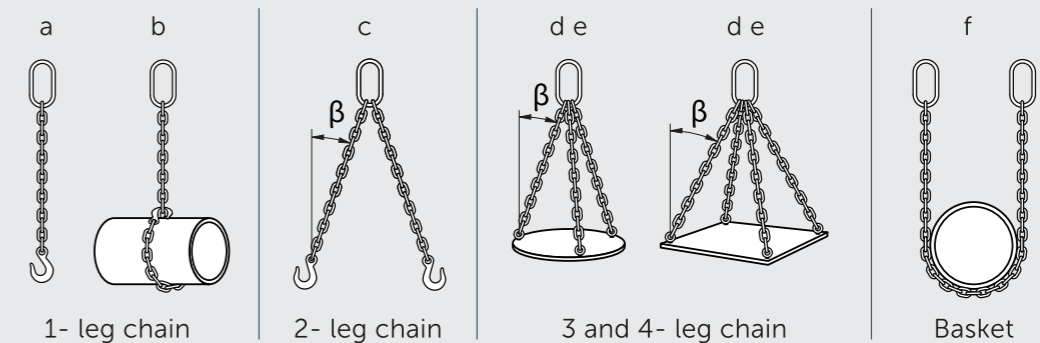
The weight of lashing steel chain vs. Green Pin Tyca[®] Chain.

	Steel Chain G80 13mm	Green Pin Tyca [®]
One flatbed truck carries 6 x 6 meters of chain	162 kg. (357 lb.)	20 kg. (44 lb.)
Weight loaded and unloaded once per day	324 kg. (714 lb.)	40 kg. (88 lb.)
245 working days / year	79,380 kg. (175,003 lb.)	9,878 kg. (21,777 lb.)

Source: Mammoet.

Lifting Configurations

Green Pin Tyca[®] can be used in multiple lifting configurations. Safety Factor: 4:1

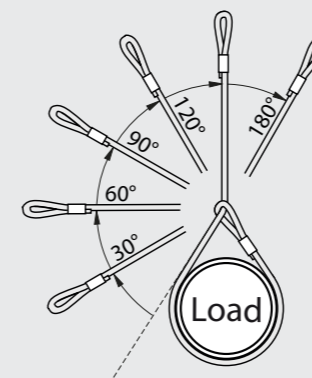


Working Load Limit table for Green Pin Tyca[®] Chain Slings generally to EN818-4

Type of hitch	a	b	c	c	d e	d e	f
Angle of inclination (β)	-	-*	0°-45°	45°-60°	0°-45°	45°-60°	-**
Load factor	1	0.8	1.4	1	2.1	1.5	1.5
Working Load Limit (t)	5.0	4.0	7.0	5.0	10.5	7.5	7.5

Working Load Limit table for Green Pin Tyca[®] Chain Slings generally to ASME B30.9

Type of hitch	a	b	c	c	c	d e	d e	d e	f
Angle of inclination (β)	-	-*	0°-30°	30°-45°	45°-60°	0°-30°	30°-45°	45°-60°	-**
Load factor	1	0.8	1.73	1.4	1.0	2.6	2.1	1.5	1.5
Working Load Limit (t)	5.0	4.0	8.65	7.0	5.0	13	10.5	7.5	7.5



Angle of Choke	Rated load % of single leg chain sling	Rated load (t) of single leg chain sling
120°-180°	80%	4.00t
90°-119°	65%	3.25t
60°-89°	55%	2.75t
30°-59°	40%	2.00t

* See below capacity reduction table of angles of choke less than 120°.
 ** See below capacity reduction table for non-vertical chain sling legs.

Don't just take our word for it

Green Pin Tycan® has been thoroughly tested in our testing facilities and in real-life circumstances. Not only that, the quality and performance of Green Pin Tycan® is also recognized by respected industry players.

Trusted users

Green Pin Tycan® is already being used by some of the world's largest project logistics companies, including Mammoet who use Green Pin Tycan® in multiple locations worldwide.

Trusted recognition

Green Pin Tycan® was recently awarded the LEAA Innovation of the Year at its annual UK exhibition and conference.

Trusted qualification

Green Pin® worked in close collaboration with DNV GL, the global quality assurance- and risk management company, to create a new standard for high performance Fibre Chain. Green Pin Tycan® is qualified for both lashing and lifting operations by DNV GL.



Evolve your safety and efficiency with Green Pin Tycan® Chains

- ✓ Up to eight times lighter than steel and soft to the touch
- ✓ Made from Dyneema® fibre™: as strong as steel and very rugged
- ✓ Increased safety for crew and cargo
- ✓ Improved operational efficiency
- ✓ Used by leading companies
- ✓ DNV GL Certified Technology

tycan.com



VAN BEEST B.V.

Head Office
P.O. Box 57
3360 AB Sliedrecht
The Netherlands
Telephone +31 184 41 33 00
E-mail sales@vanbeest.nl

VAN BEEST GmbH

Industriestraße 9
D-59457 Werl
Germany
Telephone +49 2922 97 430
E-mail sales@vanbeest.de

VAN BEEST FRANCE S.A.S.

Route de Chanier
63250 Celles sur Durolle
France
Telephone +33 (0)4 73 51 89 51
E-mail sales@vanbeest.fr

VAN BEEST USA, L.L.C.

US main office
1357 Sheffield Blvd.
Houston, Texas 77015
USA

Chicago office
158 South Pinnacle Drive,
Romeoville, IL 60446
USA

Telephone +1 713 674 57 53
E-mail sales.us@vanbeest.com



GREEN TO GO

tycan